

Our Techno-Aide items are 20% off listed prices through April 30 when you order through www.colortrieve.com or call (800) 225-4805

Accessories for Pediatric Radiology Imaging

manufactured by



distributed by





Add some Color & Fun to your department while at the same time provide Vital Radiation Protection for your Patients.

Diaper Guard: Pediatric Protective Diaper

Specifically designed radiation protection diapers accommodate infants up to small children. Color coded regular lead diapers: Small (red), medium (green), large (yellow). 0.5mm Pb equiv. protection.

| Cat.# | Back x Length x Front | Size | List |
|-------|-----------------------|----------|----------|
| GBR-S | 15.5"X13"X9" | SMALL | \$57.00 |
| GBR-M | 12.5"x12"x7.5" | MEDIUM | \$66.00 |
| GBR-L | 9.5"x11"x5" | LARGE | \$74.00 |
| GBS-3 | Set of all 3 | SET OF 3 | \$186.00 |



Gonadal Guard: Pediatric

Specifically designed sets will accommodate neonatal up to small children. Gender appropriate gonadal shielding. 0.5mm Pb equivalency protection.

MALE (Blue/set of 4)

| Cat.# | Lead type | List |
|-------|-------------|----------|
| GMR4 | Regular | \$108.00 |
| GML4 | Lightweight | \$145.00 |
| GMG4 | Lead Free | \$178.00 |

FEMALE (Pink/set of 5)

| Cat.# | Lead type | List |
|-------|-------------|----------|
| GFR5 | Regular | \$137.00 |
| GFL5 | Lightweight | \$186.00 |
| GFG5 | Lead Free | \$231.00 |



Diaper Guard: Protective Diaper

Specifically designed radiation protection diaper for older children who present with unique positioning challenges. 0.5mm Pb equiv. protection.





Radiation Protection for your "Little Patients".

Kids Lap Guard: Half Apron
 Easy to use 1" buckle belt closure. Belt is 30" long. 0.5mm Pb equivalent protection. Excellent protection for small patients. Half apron is 8" wide x 10" long. Unisex for boys & girls. Available in over 40+ colors.



| Cat.# | Media Type | List |
|-------|-------------|---------|
| LKR | Regular | \$38.00 |
| LKL | Lightweight | \$46.00 |
| LKG | Lead-Free | \$71.00 |

Child Guard: Front Protection
 Ideal for younger patients creating safer and more secure protection than lead drapes or shields. 0.5mm Pb equivalent protection. Unisex for boys & girls. 18" wide x 24" long. 30" belt. Available in over 40+ colors.



| Cat.# | Media Type | List |
|-------|-------------|----------|
| KGR | Regular | \$137.00 |
| KGL | Lightweight | \$203.00 |
| KGG | Lead-Free | \$256.00 |



Cat# SCR-C



Cat# BSR-C

Special Protection
 0.5mm Pb equiv. protection of the breast area providing extra protection during scoliosis and spine imaging.

| Cat.# | Media Type | List |
|-------|------------|---------|
| SCR-C | Regular | \$90.00 |
| BSR-C | Regular | \$48.00 |

Kids Semi Guard: Half Apron
 Convenient hook & loop closure. Strap is 30" long. 0.5mm Pb equivalency protection. Excellent protection for small patients. 8" wide x 10" long.



| Cat.# | Media Type | List |
|-------|-------------|---------|
| SKR | Regular | \$41.00 |
| SKL | Lightweight | \$52.00 |
| SKG | Lead-Free | \$76.00 |

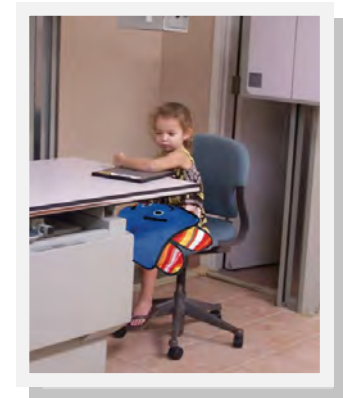
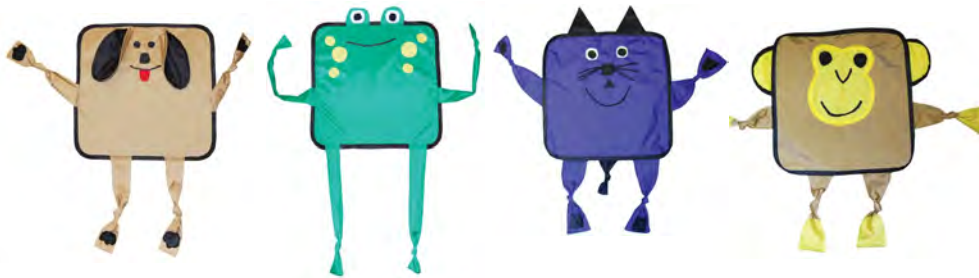
KID-FRIENDLY PROTECTION

KIDDIE KOVERS: Small Blanket Protection

What makes Kiddie Kovers Unique:

- Decrease anxiety and fear with a “Hug” from a friendly buddy.
- All purpose lead blanket protects children from radiation.
- 0.5mm Pb equivalency protection (regular lead only)
- Protective panel is 18” x 18” and safe for all modalities

| Cat.# | Description | List |
|---------|-------------|----------|
| KK-LBUG | Ladybug | \$132.00 |
| KK-BBEE | Bumble Bee | \$132.00 |
| KK-TURT | Turtle | \$132.00 |
| KK-BFLY | Butterfly | \$132.00 |
| KK-PUPP | Puppy | \$132.00 |
| KK-FROG | Frog | \$132.00 |
| KK-CATT | Cat | \$132.00 |
| KK-MNKY | Monkey | \$132.00 |



Omni Blankets: General Blanket Protection

Used over patients or equipment to protect from radiation exposure. Used underneath patients prevents scatter radiation. 0.5mm Pb equivalency protection. Choose any color fabric.



| Cat.# | Media Type | Small | Med | Large |
|-------|-------------|----------|----------|----------|
| OMR | Regular | \$89.00 | \$119.00 | \$140.00 |
| OML | Lightweight | \$123.00 | \$155.00 | \$198.00 |
| OMG | Lead-Free | \$194.00 | \$247.00 | \$305.00 |

Front Protection Aprons:



Cat# EV_

Shown with Optional Free Back Strap add Cat# EMS

EZ Guard

Our Most Popular Apron. With criss-cross Back. Double fold binding for strength and tear resistance. 0.5mm Pb equiv. protection. Free dual pocket to store an attached thyroid collar and a separate pocket for other items. Concealed shoulder pads for extra comfort. 2 year warranty on materials/workmanship. Free embroidery and/or a free logo over the pocket if desired.



Examples of some of the **FREE** Logos that we can embroider on your New Apron.



Cat# EB_

Shown with Optional Free Back Strap add Cat# EMS



Have a little **FUN** with our **EXCLUSIVE**

FROG APRON

Catalog # 202
Add \$75 to the cost of any EZ Guard hook and loop apron style

| Hook & Loop | Cat# | Lead Type | Petite Small Medium | Large X-Large | 2X 3X |
|-------------|------|-----------|---------------------|---------------|-------|
| | EVR | Regular | \$170 | \$182 | \$203 |
| | EVL | Light Wt. | \$215 | \$236 | \$256 |
| | EVG | Lead Free | \$256 | \$273 | \$297 |

| Buckle | Cat# | Lead Type | Petite Small Medium | Large X-Large | 2X 3X |
|--------|------|-----------|---------------------|---------------|-------|
| | EBR | Regular | \$170 | \$182 | \$203 |
| | EBL | Light Wt. | \$215 | \$236 | \$256 |
| | EBG | Lead Free | \$256 | \$273 | \$297 |



Cat# VF_

Cat# VM_

Vest & Skirt Guards

Separate Men and Women's styles for the best comfort! Double-fold binding for strength and tear resistance. Distributes weight better between the shoulders & hips. 0.5mm Pb equiv. protection in the front and 0.25mm Pb equiv. protection in the back. Hook and Loop closure is fast and easy. Free dual pocket to store an attached thyroid collar and a separate pocket for other items. Concealed shoulder pads for extra comfort. Comes with a two



Cat# SF_

Cat# KM_

| Female Vest | Cat# | Lead Type | Petite Small Medium | Large X-Large | 2X 3X |
|-------------|------|-----------|---------------------------|------------------|----------|
| | VFR | Regular | \$153 | \$165 | \$186 |
| | VFL | Light Wt. | \$207 | \$227 | \$248 |
| | VFG | Lead Free | \$240 | \$256 | \$277 |

| Male Vest | Cat# | Lead Type | Petite Small Medium | Large X-Large | 2X 3X |
|-----------|------|-----------|---------------------------|------------------|----------|
| | VMR | Regular | \$157 | \$170 | \$190 |
| | VML | Light Wt. | \$215 | \$231 | \$256 |
| | VMG | Lead Free | \$256 | \$273 | \$297 |

| Female Skirt | Cat# | Lead Type | Petite Small Medium | Large X-Large | 2X 3X |
|--------------|------|-----------|---------------------------|------------------|----------|
| | SFR | Regular | \$153 | \$165 | \$186 |
| | SFL | Light Wt. | \$207 | \$227 | \$248 |
| | SFG | Lead Free | \$240 | \$256 | \$277 |

| Male Kilt | Cat# | Lead Type | Petite Small Medium | Large X-Large | 2X 3X |
|-----------|------|-----------|---------------------------|------------------|----------|
| | KMR | Regular | \$157 | \$170 | \$190 |
| | KML | Light Wt. | \$215 | \$231 | \$256 |
| | KMG | Lead Free | \$256 | \$273 | \$297 |



Cat# LER-VFPL
\$178

Protective Eyewear

Contemporary designs for style and comfort. Available in many colors & shapes. Provides .75mm protection for the eyes during fluoroscopy.





Example: 30 x 30 Solid Shield in Yellow #41



Example: 30 x 30 Pleated Shield in Purple #53

Patient Protective Shielding

Available in a Host of Bright Colors!

Specifically designed for radiation protection. Various Shield Sizes Available in solid panels or pleated panels to meet your individual needs. Adjustable height from 8" to 60" to accommodate children and patients under 5" tall. Hardened chrome steel post with Posi-Lock height adjustable arm and spring-loaded pin for easy adjustment. 0.5mm Pb equiv. protection.

Deluxe Shields: Solid Panel

| Cat.# | Width x Height | List |
|------------|----------------|----------|
| LPS-T3024S | 30" X 24" | \$491.00 |
| LPS-T3030S | 30" X 30" | \$533.00 |
| LPS-T3036S | 30" X 36" | \$557.00 |
| LPS-T3042S | 30" X 42" | \$574.00 |
| LPS-T3048S | 30" X 48" | \$615.00 |

Deluxe Shields: 5-Panel

| Cat.# | Width x Height | List |
|------------|----------------|----------|
| LPS-T3024P | 30" X 24" | \$533.00 |
| LPS-T3030P | 30" X 30" | \$574.00 |
| LPS-T3036P | 30" X 36" | \$599.00 |
| LPS-T3042P | 30" X 42" | \$656.00 |
| LPS-T3048P | 30" X 48" | \$681.00 |

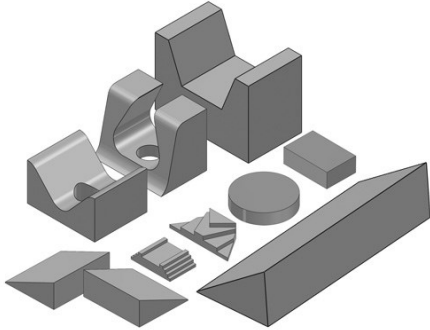


Standard 5-Star Base Shields
Available in 3 sizes. Adjustable height from 36" to 60". Stable star base. 0.5mm Pb equiv. protection.

| Cat.# | Width x Height | List |
|-----------|----------------|----------|
| LPS-S2424 | 24" X 24" | \$429.00 |
| LPS-S2436 | 24" X 36" | \$458.00 |
| LPS-S2448 | 24" X 48" | \$487.00 |



Pediatric Patients come in all sizes and we have the Radiology Accessories You Need.



Over 90+ sizes and shapes to choose from!



Positioning Sponges

Used to provide comfortable positioning of the patient and to support a particular focal area of the body. Soft, open cell, polyurethane foam. Foam has minimal attenuation, is fire retardant, and has been the Industry standard for decades. Coated sponges also available.



Sandbags and Sandsocks

Used to stabilize patients for imaging. Heat sealed inner sleeve prevents leakage of sand. Reinforced heavy gauge vinyl. Sandsocks are loosely filled sandbags that contour to a broad range of shapes and forms. Perfect for every pediatric department.



| Cat.# | Kits | List |
|--------|--------------|----------|
| SBK-PA | Sandbag Kit | \$99.00 |
| SBK-SA | Sandsock Kit | \$130.00 |

Table Pads: Half Size for Pediatric Imaging

Can be used for imaging tables to provide a little extra comfort for the patient. Available in Heavy Gauge Vinyl or Nylon Fabric to match your décor. Fabricated for durability and longevity.

Size: 36" x 23.25" x 1"



| Cat.# | Table Pad | List |
|--------|-----------|---------|
| PAD-36 | Vinyl | \$74.00 |
| PAD-37 | Fabric | \$95.00 |



Head Paddles

Cat# RHI-CP \$70.00





X-Ray Markers

Each radiograph must include an appropriate marker that clearly identifies the patients right or left side. These are mandated in analog & digital imaging. We have a host of marker styles to choose from. Available with and without initials.



CAUTION
X-RAY IN USE



X-Ray Signage:

| Cat.# | Signage | List |
|----------|-------------|---------|
| CXR-13EB | Xray in Use | \$11.00 |
| PS-04ER | If Pregnant | \$16.00 |
| CRA-15 | Caution | \$16.00 |

* Other X-Ray Signs available



Receptor Holder accepts grids and caps. Base plate slide under patient of pad. Upper and lower channels slide on 24" post.

Cat# 40LDH \$207.00

Patient Calipers

Cat# CAL-21 \$48.00

General Room Accessories

Colortrieve has a breadth of products that are used in Pediatric Imaging Departments. Techno-Aide manufactures and offers a full line of general room accessories as well as carts, cabinets, racks, workstations and seating.

With Eleven Product Lines, we are your one stop shop for Imaging Accessories. The most common Imaging Room Accessories are shown here.



| Cat.# | Accessory Item | List |
|--------|------------------|----------|
| BIV-70 | Standard IV Pole | \$82.00 |
| BSH-65 | Step Stool | \$82.00 |
| BEL-90 | General Light | \$128.00 |
| BPS-20 | Stool | \$247.00 |
| BCS-73 | Universal Cart | \$313.00 |



Manufactured in an
FDA
Registered Facility





Burlington, MA

www.colortrieve.com

(800) 225-4805



- ◆ **Radiation Protection**
- ◆ **Aprons, Thyroid Collars**
- ◆ **Blankets & Pads**
- ◆ **Shields & Barriers**
- ◆ **Sponges & Sandbags**
- ◆ **Positioning Aides**
- ◆ **X-Ray Markers**